

Hunza 220-240V Constant Current Driver 4W

Dimmable | Output: 4W 6V

PROJECT:
TYPE:
SOURCE:
NOTES:

SPECIFICATIONS

- Dimmable with leading edge or trailing edge dimmers
- IP65 for exterior use
- Flying leads in and out
- Compact design

Input parameters

Rated input voltage	220-240VAC
Input current (Full load)	0.01A
Input frequency	50/60Hz
Max input power	6.0W
Power factor (Full load)	≥0.90C
Inrush current	≤5.0A

Output parameters

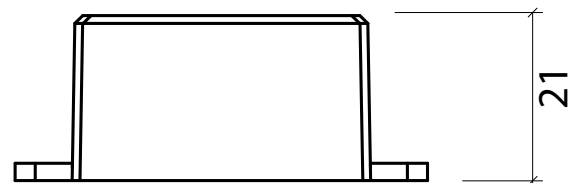
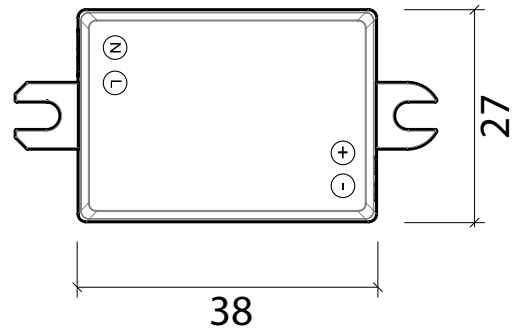
Output Voltage	3-6V
Output Current (Full load)	700mA±5%
Output Power (Full load)	4W
Operating Frequency (Full load)	70KHz

Environment

Working temperature	-20 ... + 50°C
Safety	Tested to AS/NZS requirements

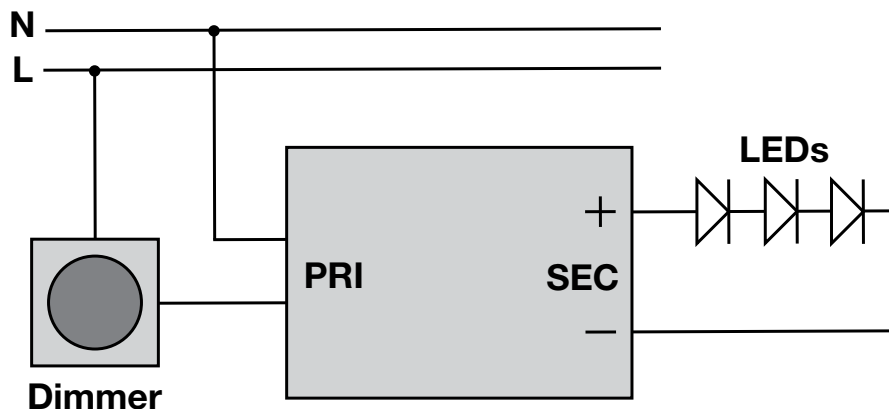
Protection

No load	Auto-recovery if fault is removed
Over load	
Short circuit	
Expected life	30,000 Hours
Warranty	2 year *third party warranty
IP rating	IP65



Order Code: DR LDRTL700-4W-6V

WIRING DIAGRAM



*Due to continued product enhancements, specifications may change without notification.